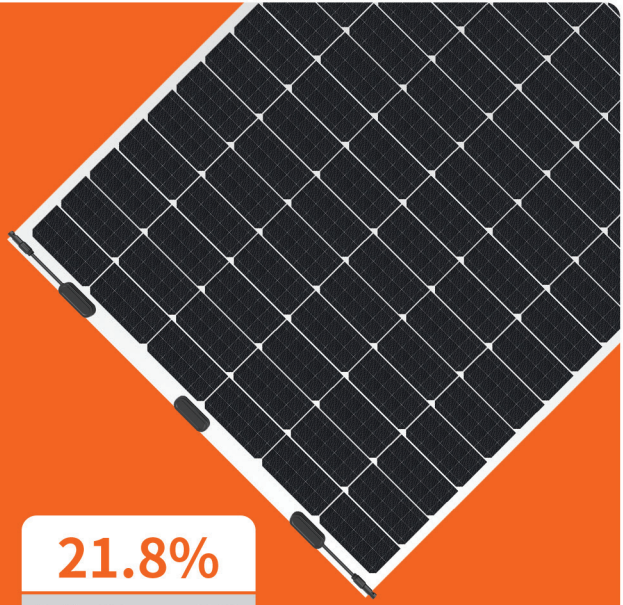


S-Flex 6 II · 365-385W

MWT Mono PERC Flexible Module

21.8%

Module efficiency up to 21.8%



Features



Light, Thin design

4.9kg weight, 1.7mm thickness, match various requirements for low-load projects



Customizable

Customized design for different scenarios



Ultra Flexible

Ultra-thin silicon wafers with advanced organic polymer encapsulation materials, minimum bending radius reach 0.30m, fit all kinds of curved surface perfectly



Convenient Installation

Easy installation and convenient transportation with lower cost



High Efficiency And Reliability

Busbar-free design increases cell conversion efficiency, more power output can be achieved at low irradiance conditions



Lead-free

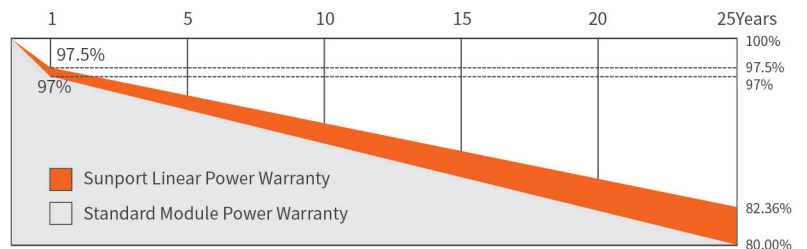
Eco-friendly PV design achieves lead-free MWT module without soldering materials

Reinsurance Coverage for 25 Years



Insured by LLOYD'S

LLOYD'S



※1st year degradation less than 2.5%, 25 years power output 82.36% guaranteed.

Comprehensive Qualifications & Certifications

- ★ ISO 9001: 2015 Quality Management System
- ★ ISO 14001: 2015 Environment Management System

- ★ ISO 45001: 2018 Occupation Health Safety Management System



Electrical Characteristics at Standard Test Conditions(STC)

Spec/Model	Unit	SPP365QHE5	SPP370QHE5	SPP375QHE5	SPP380QHE5	SPP385QHE5
Max-Power(Pm)	W	365	370	375	380	385
Power Tolerance	W			0~+5		
Max-Power Voltage(Vm)	V	34.9	35.1	35.3	35.5	35.7
Max-Power Current(Im)	A	10.46	10.54	10.62	10.70	10.78
Open-Circuit Voltage(Voc)	V	42.4	42.6	42.8	43.0	43.2
Short-Circuit Current(Isc)	A	11.09	11.16	11.23	11.30	11.35
Module Efficiency(ηm)	%	20.7	21.0	21.2	21.5	21.8

STC: AM=1.5, Irradiation 1000W/m², Module Temperature 25°C

Electrical Characteristics at Nominal Module Operating Temperature (NMOT)

Spec/Model	Unit	SPP365QHE5	SPP370QHE5	SPP375QHE5	SPP380QHE5	SPP385QHE5
Max-Power(Pm)	W	274	278	282	286	290
Max-Power Voltage(Vm)	V	32.8	33.0	33.2	33.4	33.6
Max-Power Current(Im)	A	8.35	8.42	8.49	8.56	8.64
Open-Circuit Voltage(Voc)	V	39.9	40.1	40.3	40.5	40.7
Short-Circuit Current(Isc)	A	8.91	8.98	9.05	9.12	9.19

NMOT: Irradiation 800W/m², Ambient temperature 20°C, Wind Speed 1m/s

Temperature Coefficient

Nominal Module Operating Temperature	43±2°C
Temperature coefficient of Pmax	-0.36%/°C
Temperature coefficient of Voc	-0.28%/°C
Temperature coefficient of Isc	0.06%/°C

Operating Conditions

Max. system voltage	DC1500V(IEC)
Max. series fuse rating	18A
Operating temperature range	-40°C~+85°C
Connector	MC4兼容

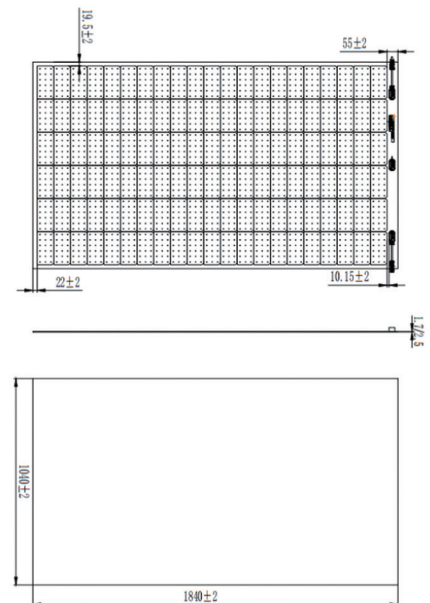
Mechanical Characteristics

Installation Module Dimension (L×W×H)	1840mmx1040mmx1.7mm/2.5mm
Actual Module Dimension(L×W)	1763mmx1001mm
Weight	4.9kg/6.3kg
Back material	Back Sheet(white)
Cell (quantity / material / type / dimensions)	126(21x6) / Mono / Half-cell
Encapsulant	POE
Frame	None
Junction box(protection degree)	IP68
Cable (length/cross-section area)	Customizable / 4mm ²
Bending radius	0.3m

Package

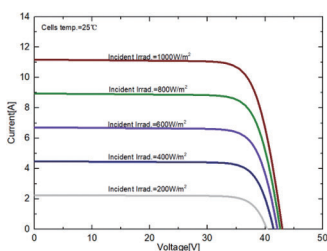
Container Size	Quantity(pcs)	Quantity(per pallet)
40' HQ	1104	46

Module Size



I-V Curve

I-V Curves of SPP375QHE5 at different irradiance



I-V Curves of SPP375QHE5 at different cell temperature

